



Freedom of Expression !



Perfecting the Art of Vertical Mobility



Johnson Snapshots

- ▲ Johnson Lifts are the pioneers in vertical transportation over 6 decades in India.
- ▲ Number one in sales volume since 2009.
- ▲ 300,000 square metres is the total area of our three lift factories with a combined manufacturing capacity of over 18,000+ units/ annum.
- ▲ We have fourteen lift models to suit every budget and need.
- ▲ Currently, we have over 1,00,000+ units under Annual Maintenance Contracts in India.
- ▲ Johnson manufactures heavy duty escalators in a 20,000 square metre factory in Chennai.
- ▲ We offer a wide range of escalators and travelators to cater to the needs of every sector.
- ▲ We operate from 80+ branches in India and 10+ offices overseas, with over 9,000+ Employees worldwide.

At 155 feet, one of the tallest lift testing towers in India at our Chennai factory.





The inside story

"Sukranti is manufactured at Johnson's three lift factories: two units in Chennai and one in Nagpur. The facilities are world-class in every way, from cutting-edge equipment to quality processes, and from the skills of our manpower to the brains in R&D. So when you buy a Sukranti, you get the best in the world."



Hi-speed auto-loading CNC turret punch in action



Micron-accurate CNC press brake



The Salvagnini automatic line.

Breakthrough advantages !

Sukranti the lift without a machine room, is the next generation in vertical transportation.

Save energy.

Sukranti's gearless motor reduces your power consumption by 60% and increases efficiency around 80% by:

- Reducing start up current
- Saving electricity - the busier the lift, the more the saving as a result of high efficiency.
- Less heat generation, greater efficiency of motor as it runs at a lower rpm.

Save the environment.

Sukranti is a green lift for greener buildings. The gearless motor requires no lubrication and zero maintenance. No oil means no pollution

Smoother ride.

The speed control works with closed loop feedback from the encoder to ensure safe and smooth travel.

Save space

Designed to modular specifications that saves valuable space in the liftwell. This means cost savings and more marketable floor space.

Save in the future.

Sukranti's gearless motor has only one moving part and the bearings are completely sealed. It generates higher lift travelling speeds at much lower motor speed. All this adds up to trouble-free, smooth operation for decades to come.



Save your health

EyeRis: Contactless, virtual lift operating app. A Johnson innovation for your safety.

Available on Google Play Store and Apple App Store, Compatible with Android and Apple IOS. EyeRis connects your smartphone to your lift system using QR code technology and lets you operate your lift by just tapping the buttons on your screen.



Now, you can be sure your lift experience is not only smooth, but also safe.



Enviably Features

- No machine room: compact controller fitted in the lift shaft
- Max. travel speed of 2 mps
- Upto 78 metres travel height (27 floors)
- Maximum load of 1768 kg

TFT Colour Display Easily customisable to display notices and advertisements, only for specific models

VVVF Controller The Variable Voltage Variable Frequency (VVVF) control, ensures 50% energy savings. It also creates comfortable ride quality with jerk-free starts and stops; Smooth acceleration and deceleration, and no landing variations, time after time. In the long run, this prevents wear and tear of components, which means less downtime and huge savings on spares

VVVF Door Controller Silken smooth door movement. Advanced features like adjustable independent times for opening and closing. Slow-nudging feature ideal for high traffic situations.

Stainless Steel Buttons Sophisticated design -buttons flush with backplate. Orange LED illumination. Tamper resistant Etched numbers. Braille markings.

Overload Indicator There will be an audible "overload" announcement as well as a message in the display panel.

Fireman Switch To enable fire-service personnel to take over complete control over one or more lifts.

Hall lantern with gong Landing fixture with illuminated arrow to indicate the direction in which the lift is heading and ringing tone is sounded as the lift stops at the landing.

Floor Annunciator Recorded voice announces the floor number on arrival. Accompanied by pleasant music.

Automatic Rescue Device - ARD

Automatically takes the lift to the nearest level in the case of a power interruption.

Door Frame Only Johnson Lifts come with door frames in Decorative Laminated Steel Sheet (DLSS) that gives strength as well as an elegant appearance.

Full Height Car Fixture Designed specially for tall buildings. With Press & Speak facility.

Infra Red Screen Sensor Curtain of 212 infra red beams to prevent accidental closing of the door.



Compact Logix Control Panel fitted on front fascia of top landing.

Sukranti Gallery



As you turn the page, imagine you are stepping into a wonderland of lifts.

Here, you can choose from the most luxurious finishes, hi-tech operating panels, sleek false ceilings and more. The best the world has to offer for your most exclusive customers.

Select from the range of options and create your own work of "art"!

Cedar- Hairline



Cedar- siderview



Teak & SS Hairline



Etched Gold



Etched Gold - sideview



SS Hairline



Dama



Honeycomb



Narrow DoorJamb



Buttons



JLBT01 - Round



JLBT01 - Round
Tactile (Optional)



JLBT03 - Oval

Landing Operating Panels



JLLP01
Grouting



JLLP03 (Optional)
Surfacemount Premium



JLLP04 (Optional)
Grouting - Premium



JLLP05
Surfacemount

Hall Lanterns



JLHL01 - Standard
Horizontal



JLHL02 - Premium Horizontal
without display (Optional)

Displays



JLDP01 Orange Square
Dot Matrix (OSDM)



JLDP03
LCD 5" (Optional)



JLDP04 TFT 4.3"
Horizontal (Optional)



JLDP04 TFT 4.3"
Vertical (Optional)



JLDP05 TFT 7"
Vertical (Optional)

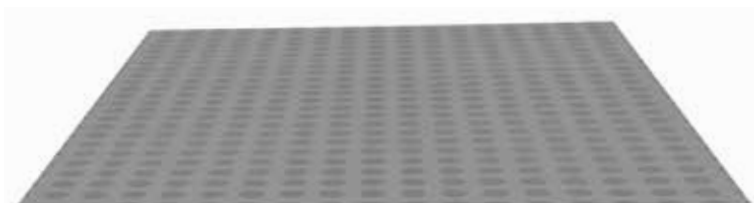


JLDP05 TFT 7"
Horizontal (Optional)



JLDP06
TFT 10" (Optional)

Flooring



JLFL01 - PVC



JLFL02 - Chequered Plate (MS / ALUM / SS) (Optional)
Standard - 3mm thickness (6mm thickness - optional)

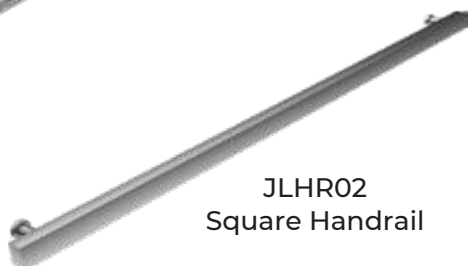


JLFL03 Pergo (Wooden) (Optional)

Handrails



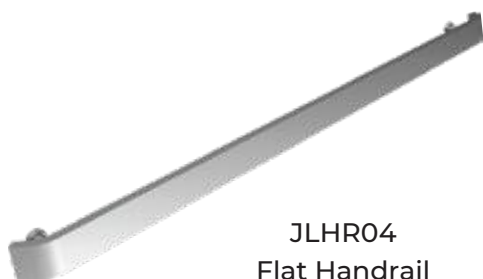
JLHR01
Round Handrail



JLHR02
Square Handrail



JLHR03
Round Handrail
(physically challenged)



JLHR04
Flat Handrail
(optional)



JLHR05
Tri-Round Handrail
(optional)

Car Operating Panels



JLCP01 - COP
Flushmount



JLCP02 - Full
COP Flushmount
(Projected 8mm)

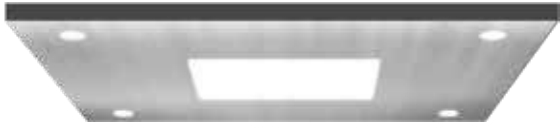


JLCP03 - Premium
Full COP (Optional)
Flushmount

*COP: JLCP01 Can be utilized for up to 14 stops.

*JLCP01: Not Suitable For Physically Challenged Requirements.

Ceilings



JLFC01- Sleek Rectangular
with Crossflow Fan (Optional)



JLFC02 - Premium Sleek Rectangular
with Crossflow Fan (Optional)



JLFC03 - Sleek Small Circular /
Square Diffuser (Optional)



JLFC04 - Premium Strip Ceiling
with Crossflow Fan (Optional)



JLFC06 - Standard
Crossflow Fan



JLFC08 - Sleek Small Circular
with Crossflow Fan



JLFC09 - Sleek Small Circular
without diffuser with Crossflow Fan



JLFC15 - Decorative
ceiling with Circular Fan
(or Crossflow fan - optional)



JLFC11 - Sleek Ceiling
without diffuser with Crossflow Fan and
Emergency exit



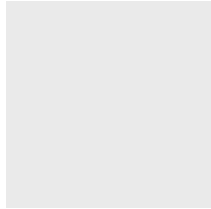
JLFC12 - Sleek Small Circular
Diffuser with Emergency exit

Cabin Finishes

Decorative Laminated Steel Sheet (DLSS)



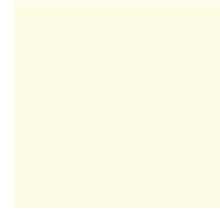
ANTHRACITE GREY



GREY



TURQUOISE BLUE



IVORY



TEAKWOOD

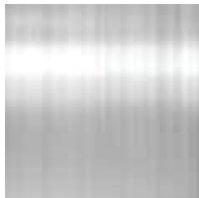


CEDARWOOD

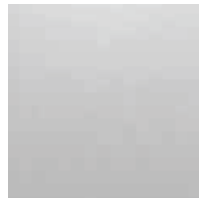


ROSEWOOD

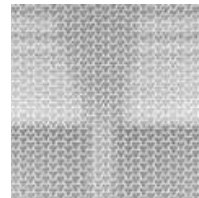
Stainless Steel



SS HAIRLINE



MIRROR



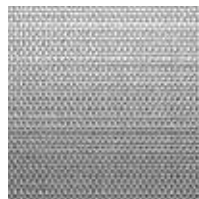
HONEYCOMB



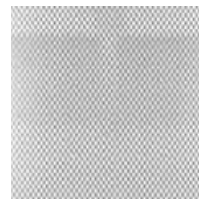
MOONROCK



ROSEGOLD



LINEN



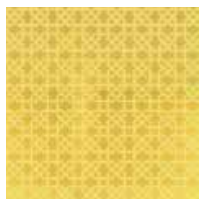
DAMA



ZEBRA HORIZONTAL



ZEBRA VERTICAL



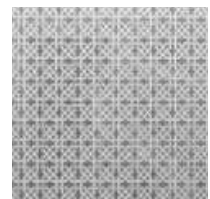
GOLD ETCHED



GOLD HAIRLINE



GOLD MIRROR



ETCHED WHITE



HOISTWAY DIMENSIONS

1.00 mps to 1.75 mps Speed

Centre Opening Door Lift

LOAD		CAR INSIDE		LIFT WELL		ENTRANCE (W)
PERSONS	Kgs	A	B	C	D	E
6	408	1000	1100	1900	1550	700
				2000	1550	800
8	544	1000	1350	1900	1800	700
		1300	1100	2150	1550	800
10	680	1000	1650	2000	2100	700
		1300	1250	2250	1700	800
		1300	1350	2250	1800	
13	884	1500	1400	2450	1800	900
		1900	1100	2850	1550	
		1100	2000	2250	2400	
15	1020	1500	1600	2550	2050	1000
		1900	1250	2850	1750	
		1200	2000	2400	2400	
16	1088	1500	1650	2550	2050	1000
		1900	1350	2850	1800	
		1300	2000	2500	2400	
20	1360	1700	1800	2550	2350	1000
		1300	2400	2350	2850	
		1500	2000	2450	2500	
24	1632	1700	2100	2550	2550	1000
		1500	2400	2500	2900	
26	1768	1500	2500	2450	3000	1000
		1600	2400	2550	3000	
		1900	2000	2850	2700	

Side Opening Door Lift

LOAD		CAR INSIDE		LIFT WELL		ENTRANCE (W)
PERSONS	Kgs	A	B	C	D	E
6	408	1000	1100	1850	1650	800
8	544	1300	1100	2150	1600	800
		1200	1100	2050	1650	
		1200	1200	2050	1750	
10	680	1300	1250	2250	1750	800
		1400	1150	2350	1700	
		1300	1350	2250	1850	
13	884	1900	1100	2850	1650	900
		1000	2100	1950	2600	
		1000	2200	1950	2700	
		1100	2000	2050	2500	
15	1020	1900	1250	2850	1850	1000
		1000	2400	1950	2900	
		1200	2000	2200	2500	
16	1088	1900	1350	2850	1900	1000
		1300	2000	2300	2500	
20	1360	1700	1800	2550	2450	1000
		1300	2400	2200	2950	
		1500	2000	2350	2600	
24	1632	1700	2100	2550	2650	1000
		1500	2400	2400	2950	
26	1768	1500	2500	2400	3000	1000
		1600	2400	2550	3000	
		1900	2000	2850	2800	

Speed in m.p.s	1.00 - 1.25		1.50 - 1.75	
Capacity	6P to 16P	20P to 26P	6P to 16P	20P to 26P
Pit Height (mm)	1600	1800	1800	
Car Height (CH)	2200 to 2600			
Overhead Height (mm)	CH + 1600	CH + 2600	CH + 2600	CH + 2600
Clear Opening (H)	2000 to 2400			
Minimum Floor to Floor Height (mm)	H + 750			

Specs



Specs

HOISTWAY DIMENSIONS

2 mps Speed

Centre Opening Door Lift

LOAD		CAR INSIDE		LIFT WELL		ENTRANCE (W)
PERSONS	Kgs	A	B	C	D	E
10	680	1000	1750	1950	2200	800
		1300	1350	2250	1850	
13	884	1100	2000	2100	2450	900
		1500	1450	2450	1950	
15	1020	1200	2000	2250	2450	1000
		1500	1600	2450	2100	
16	1088	1300	2000	2300	2450	1000
		1500	1700	2450	2200	
20	1360	1550	2000	2550	2500	1000
		1700	1800	2700	2400	
24	1632	1500	2400	2650	2900	1000
		1800	2000	2950	2600	
26	1768	1600	2400	2750	2900	1000
		1900	2000	3050	2600	

Side Opening Door Lift

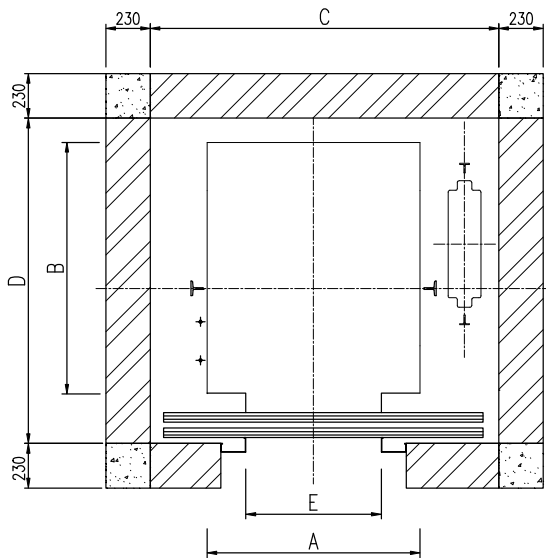
LOAD		CAR INSIDE		LIFT WELL		ENTRANCE (W)
PERSONS	Kgs	A	B	C	D	E
10	680	1000	1750	1950	2300	800
		1300	1350	2250	1950	
13	884	1100	2000	2050	2550	900
		1500	1450	2400	2050	
15	1020	1200	2000	2200	2550	1000
		1500	1600	2450	2200	
16	1088	1300	2000	2300	2550	1000
		1500	1700	2450	2300	
20	1360	1550	2000	2550	2600	1000
		1700	1800	2700	2500	
24	1632	1500	2400	2600	3000	1000
		1800	2000	2950	2700	
26	1768	1600	2400	2750	3000	1000
		1900	2000	3050	2700	

Speed in m.p.s	Capacity	Pit Height (mm)	Car Height (CH)	Overhead Height (mm)	Clear Opening (H)	Minimum Floor to Floor Height (mm)
2	10P to 15P	1800	2200 to 2600	CH + 2600	2000 to 2400	H + 750
	16P to 20P			CH + 2700		
	24P to 26P			CH + 3250		

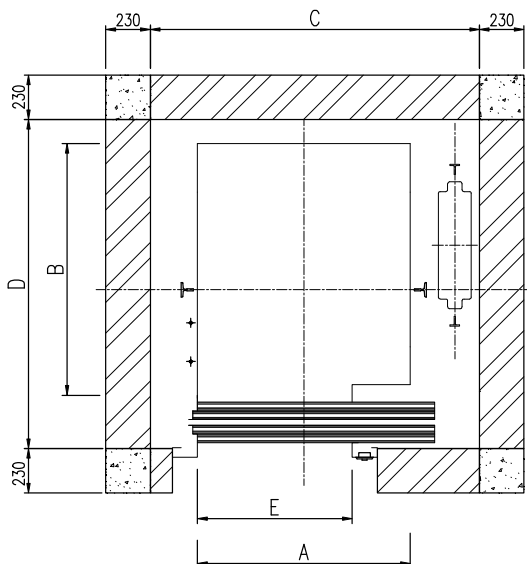


Diagrams

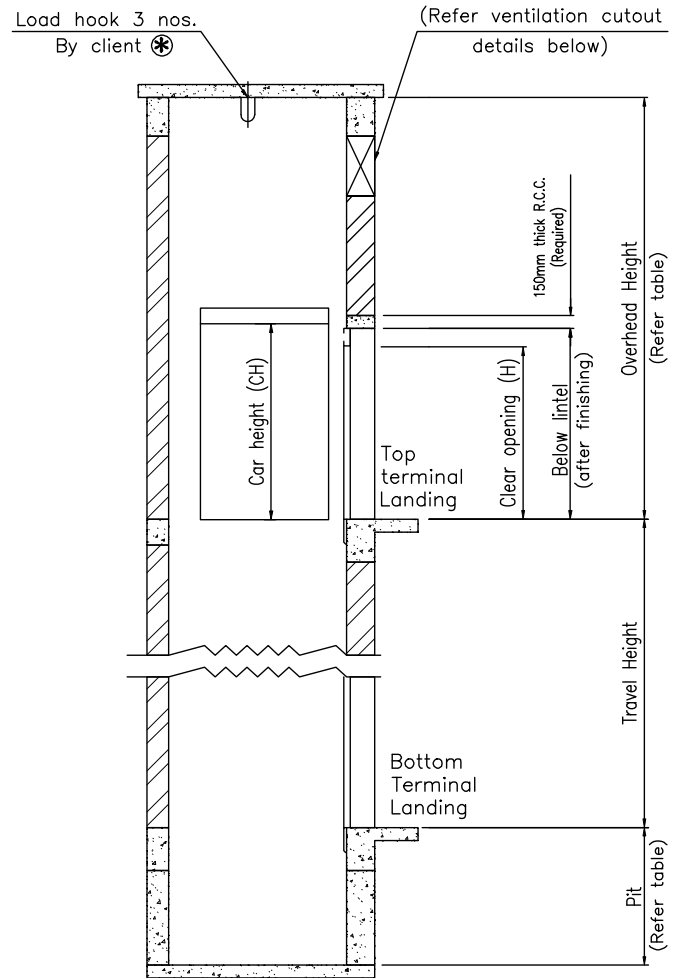
PLAN OF LIFTWELL
- 2 PANEL CENTRE OPENING DOOR



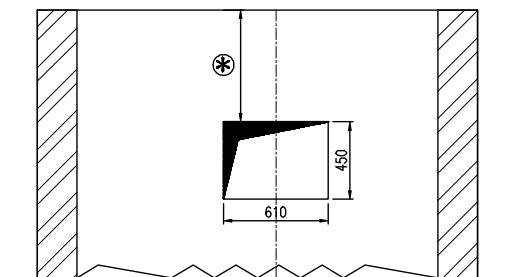
PLAN OF LIFTWELL
- 2 PANEL SIDE OPENING DOOR



ELEVATION



Ventilation Cutout Detail
(at accessible wall)



(⊗ Will be confirmed in GAD)

RCC beams required in headroom side walls will be confirmed in GAD

Note: All dimensions are in millimetres. All dimensions are clear finished liftwells after plastering. Dimensions are suitable for lift speeds upto 2 mps. Lifting hook in head room area required. All walls minimum 150RCC or 230 brick. RCC head room structural slab 150 thick designed to sustain minimum 1000 kg/m2 UDL. For specific requirements our local representative will be happy to work with you in preparation of the drawings.

SCAN FOR UPDATED SPEC



Specifications are subject to change without prior notice. Photographs, colour swatches and finishes featured are indicative.



Johnson Factories

OUR UNMATCHED MANUFACTURING CAPABILITY



Escalator factory complex in Oragadam, Chennai



Lift factory, Nagpur



Lift factory in Poonamallee, Chennai



Lift factory complex in Sengadu, Chennai

OVERSEAS

Nepal, Srilanka, Tanzania,
UAE, Uganda, Bhutan, Qatar,
Maldives, Saudi Arabia,
Oman, Bahrain

NORTH

Chandigarh, Gurgaon,
Delhi, Jaipur, Jammu,
Lucknow, Noida

EAST

Bhubaneswar, Guwahati,
Kolkata, Patna, Ranchi

CENTRAL

Amaravati, Bhopal,
Indore, Jabalpur, Nagpur,
Nashik, Raipur

WEST

Ahmedabad, Goa, Kolhapur,
Mumbai Andheri, Mumbai Mahpe,
Navi Mumbai, Pune, Shirdi,
Solapur, Surat, Vadodara

SOUTH

Bengaluru, Calicut, Chennai, Cochin,
Coimbatore, Hyderabad, Hubli, Hosur,
Madurai, Mangalore, Mysore, Puducherry,
Salem, Tirunelveli, Tirupathi, Tiruvannamalai,
Trichy, Trivandrum, Vijayawada, Vellore,
Vishakapatnam, Warangal



4 Factories | 80+ Branches in India | 10+ Offices Overseas | 9,000+ Employees



Scan to visit our website



SUKRIMKTG|08|QR|06-DT|11|25

Johnson Lifts Private Limited

Corporate Office: 1, East Main Road, Anna Nagar Western Extn., Chennai 101
+91-44-43152200 | enquiry@johnsonliftsltd.com | www.johnsonliftsltd.com