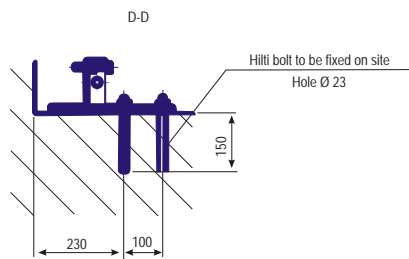
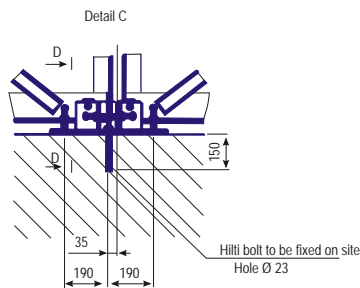
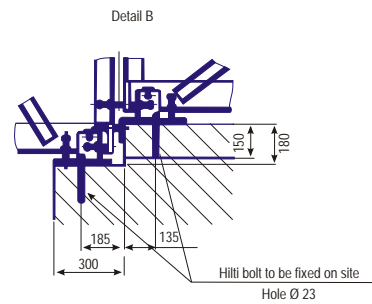
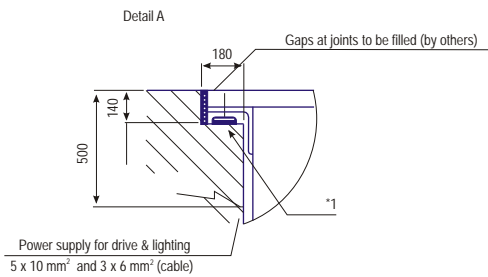
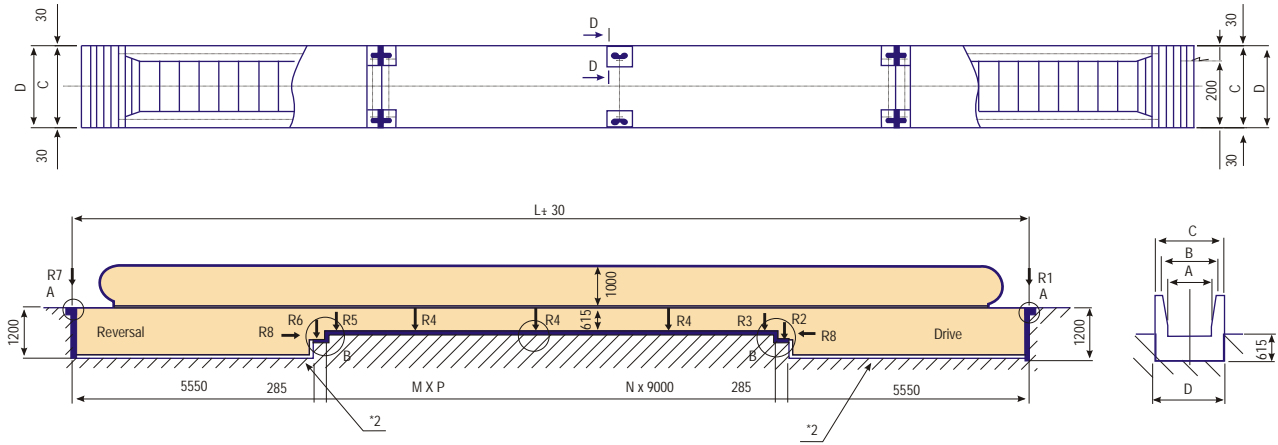


FEW Layout Drawing



A	1400	1200	1000
B	1710	1510	1310
C	1995	1795	1595
D	2055	1855	1655

Notes:

- 1) According to EN 115, the entrance to both landings must have enough area to facilitate traffic flow.
- 2) All dimensions refer to finished dimensions in mm.

Asterisks:

- *1: Supports need to be at true level.
*2: If there is a pit, it needs to be waterproof and smooth.

Support load (KN)

A	1400	1200	1000
R1	45 KN	38 KN	31 KN
R2	28 KN	25 KN	22 KN
R3	70 KN	62 KN	54 KN
R4	108 KN	95 KN	82 KN
R5	70 KN	62 KN	54 KN
R6	27 KN	24 KN	21 KN
R7	43 KN	36 KN	29 KN
R8	45 KN	40 KN	35 KN