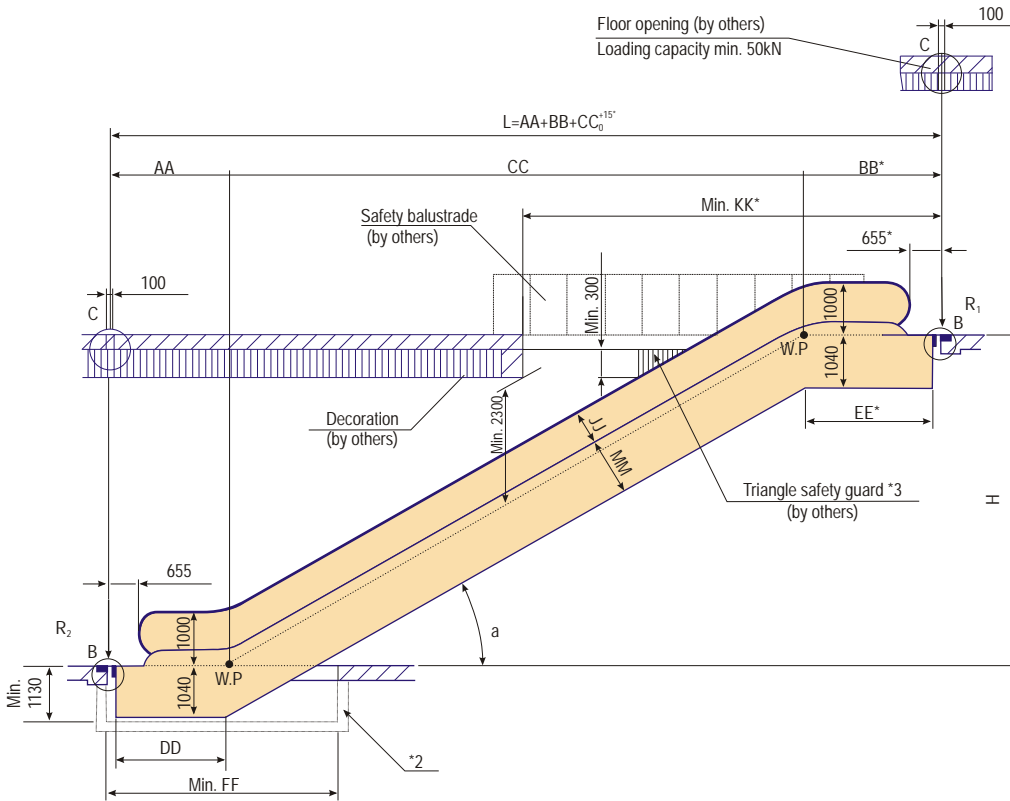


FES Layout Drawing

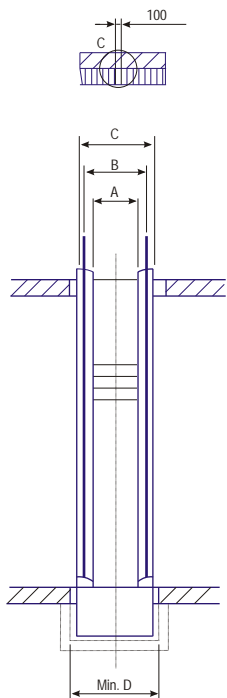
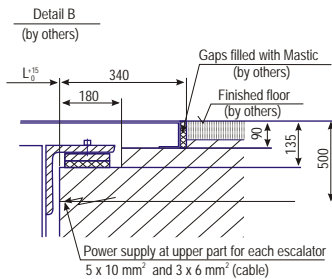
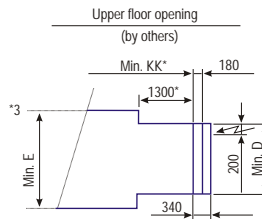
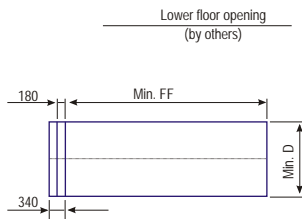


Notes:

- 1) According to EN 115, the entrance to both landings must have enough area to facilitate traffic flow.
- 2) Dimensions with mark* should be guaranteed 440 mm in case A=600 or double drive.
- 4) Intermediate support is required in case horizontal distance L is over 15m - Please contact us for specs.
- 5) All dimensions refer to finished dimensions in mm.

Asterisks:

- *1: Supports need to be at true level.
- *2: If there is a pit, it needs to be waterproof and smooth.
- *3: If dimension E cannot be guaranteed, a guard according to En 115 must be provided as shown (by others).



A	600	800	1000
B	837	1037	1237
C	1145	1345	1545
D	1200	1400	1600
E	1850	2050	2250

A	Support load (KN)
600	R1=3.4*L+15.5
	R2=3.4*L+10
800	R1=3.75*L+17
	R2=3.75*L+11
1000	R1=4.2*L+18.5
	R2=4.2*L+11.5

Note: L is in meter

Type	a	AA	BB	CC	DD	EE	FF	JJ	KK	MM
FES 302	30°	2195	2564	H*1.732	2205	2482	4200	870	7900	940
FES 352	35°	2229	2648	H*1.428	2352	2455	4000	850	7100	960
FES 303	30°	2595	2964	H*1.732	2605	2882	4600	870	8300	940
FES 353	35°	2629	3048	H*1.428	2752	2855	4400	850	7500	960